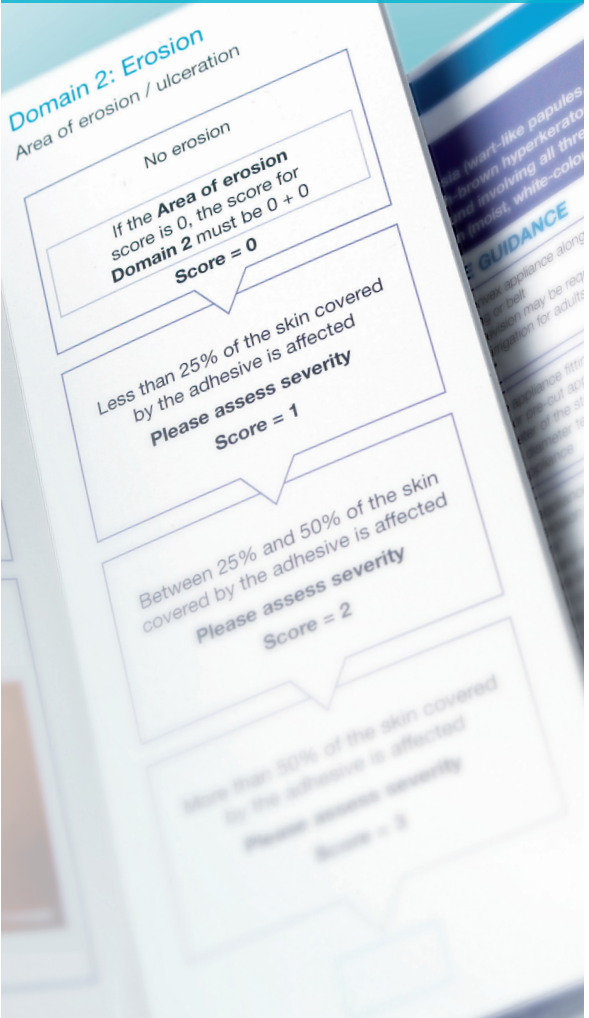


Developed in cooperation
with the Coloplast Global
Advisory Board



DET Score

- Discolouration
- Erosion
- Tissue overgrowth



The Coloplast logo is a registered
trademark of Coloplast A/S. © [2010-05]
All rights reserved Coloplast A/S, 3050
Humlebaek, Denmark.

Coloplast A/S
Holtedam 1
3050 Humlebaek
Denmark

www.coloplast.com

How to calculate the DET Score

Step 1:
Examine the peristomal skin (not the stoma mucosa) and evaluate the skin based on the descriptions in each of the three domains (discolouration, erosion and tissue overgrowth).

Maximum points in each domain:

- 3 points for the size of the affected area
- 2 points for the severity

Step 2:
Assess the **size of the area affected** in each of the three domains and score based on the key (right).

Area* affected	Score
Unaffected	0
<25%	1
25–50%	2
>50%	3

Assess the **severity** in each of the three domains using the definitions and photographs as a guide.

*Area is defined as the peristomal skin area that is covered by the adhesive

- If there is no discolouration then the skin is healthy – the area score is 0 and the total DET score must be 0.
- If there is discolouration, assess the area affected and the severity within this domain and in the other two domains.
- If the area score is 0 in either the erosion or tissue overgrowth domains then the severity score within that domain will automatically be 0 as well.

For each of the three domains calculate the subscore.

Step 3:
Calculating the Total score

- Calculate the Total score (maximum 15) by adding all of the subscores from each domain together

Please go through the descriptions for each score in the scoring system every time you perform an assessment. The total DET score gives information on overall severity, while the subscores for each domain help define the skin problem.

Note: In a situation where a large area of skin with low severity includes a small area with a high severity, the highest severity should always be scored even though the area is small.

Domain 1: Discolouration

Area of discolouration (including eroded areas and tissue overgrowth)

Normal skin (absence of any visible change and damage to epidermis)

If the **Area of discolouration** score is 0, the score for Domain 1 must be 0 + 0. The skin is normal and the **Total score** must be 0

Score = 0

Less than 25% of the skin covered by the adhesive is affected

Please assess severity

Score = 1

Between 25% and 50% of the skin covered by the adhesive is affected

Please assess severity

Score = 2

More than 50% of the skin covered by the adhesive is affected


Please assess severity

Score = 3

Domain 1: Discolouration

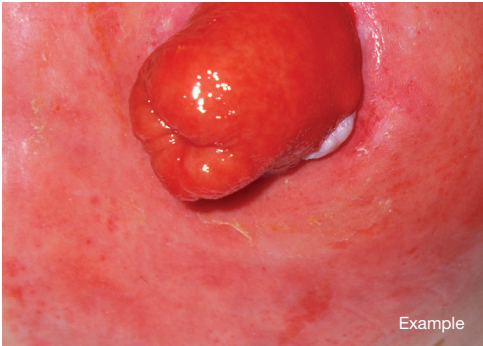
Severity of discolouration

Discolouration of the peristomal skin



Score = 1

Discolouration of the peristomal skin with complications (pain, shiny, indurated, hot, itching, burning)



Score = 2

Domain 2: Erosion

Area of erosion / ulceration

No erosion

If the **Area of erosion** score is 0, the score for **Domain 2** must be 0 + 0

Score = 0

Less than 25% of the skin covered by the adhesive is affected

Please assess severity

Score = 1

Between 25% and 50% of the skin covered by the adhesive is affected

Please assess severity

Score = 2

More than 50% of the skin covered by the adhesive is affected

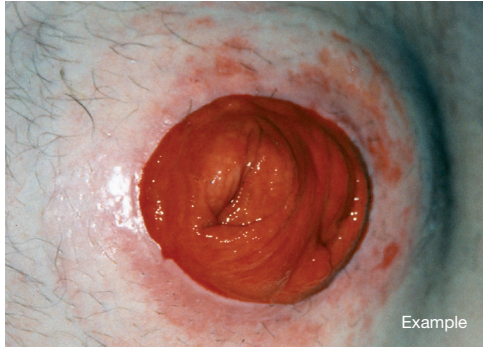
Please assess severity

Score = 3

Domain 2: Erosion


Severity of erosion / ulceration

Damage to the upper level of the skin



Score = 1

Damage to the lower layers of the skin with complications (moisture, bleeding or ulceration)



Score = 2

Domain 3: Tissue overgrowth*

Area of tissue overgrowth

*Tissue overgrowth is defined as raised tissue above skin level including hyperplasia, hypergranulation or keratinisation

No tissue overgrowth

If the **Area of tissue overgrowth** score is 0, the score for **Domain 3** must be 0 + 0

Score = 0

Less than 25% of the skin covered by the adhesive is affected

Please assess severity

Score = 1

Between 25% and 50% of the skin covered by the adhesive is affected

Please assess severity

Score = 2

More than 50% of the skin covered by the adhesive is affected

Please assess severity

Score = 3

Domain 3: Tissue overgrowth

Severity of tissue overgrowth

Raised tissue above skin level



Score = 1

Raised tissue above skin level with complications (bleeding, pain, moisture)



Score = 2

Total score

=