

Ostomy Skin Tool

Assessing peristomal skin and
obtaining a DET score

How to calculate the DET Score

Step 1:

Examine the peristomal skin (not the stoma mucosa) and evaluate the skin based on the descriptions in each of the 3 domains, discolouration (D), erosion (E) and tissue overgrowth (T).

Maximum points for each domain:

- 3 points for the size of the affected area
- 2 points for the severity

Step 2:

Assess the size of the area affected in each of the 3 domains. The area is defined as the peristomal skin area that is covered by the adhesive.

Assess the severity in each of the domains using the definitions and photographs as a guide.

- If there is no discolouration then the skin is healthy - the area score is 0 and the total DET score must be 0
- If there is discolouration, assess the area affected and the severity within this domain and in the other 2 domains
- If the area score is 0 in either the erosion or tissue overgrowth domains, then the severity score within that domain will automatically be 0 as well

For each of the 3 domains calculate the subscore.

Step 3:

Calculate the total score.

- Calculate the total score (maximum 15) by adding all of the subscores from each domain together

Please go through the descriptions for each score in the scoring system every time you perform an assessment. The total DET score gives information on overall severity, while the subscores for each domain help define the skin problem.

NOTE:

In a situation where a large area of skin with low severity includes a small area with a high severity, the highest severity should always be scored even if the area is small.



Discolouration

- There is no area of discolouration, therefore the score is 0
- As there is no discolouration, the severity must also be 0. As there is no discolouration observed the score will also be 0 in the rest of the domains as follows:

Erosion

- There is no evidence of erosion, therefore the score is 0
- As there is no erosion, the severity must also be 0

Tissue overgrowth

- There is no tissue overgrowth, therefore the score is 0

Total DET score = 0



Discolouration

- 0-25% of the area is discoloured, therefore the score is 1
- Discolouration of the skin with complications, therefore the score is 2

Erosion

- 0-25% of the skin is affected, therefore the score is 1
- Damage to the lower layers of the skin, therefore the score is 2

Tissue overgrowth

- There is no tissue overgrowth, therefore the score is 0

Total DET score = 6



Discolouration

- Up to 50% of the area is affected, therefore the score is 2
- Discolouration of the skin with complications, therefore the score is 2

Erosion

- Up to 50% of the area is affected, therefore the score is 2
- Damage to the upper level of the skin, therefore the score is 1

Tissue overgrowth

- 0-25% of the area is affected, therefore the score is 1
- Raised skin above skin level, therefore the score is 1

Total DET score = 9

Name

Hospital no

Assessor

D
Discolouration

Area

0

No discolouration -
Healthy peristomal skin


1

Less than 25% of the
skin covered by the
adhesive is affected


2

Up to 50% of the
skin covered by the
adhesive is affected


3

More than 50% of
the skin covered by the
adhesive is affected

Severity

0

No discolouration -
Healthy peristomal skin


1

Discolouration of the
peristomal skin


2

Discolouration of
the peristomal skin
with complications

Area =

+

Severity =

Subscore =

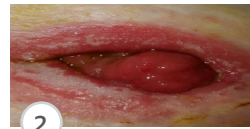
E
Erosion

Area

0

No erosion -
Healthy peristomal skin


1

Less than 25% of the
skin covered by the
adhesive is affected


2

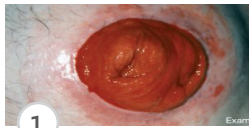
Up to 50% of the
skin covered by the
adhesive is affected


3

More than 50% of the
skin covered by the
adhesive is affected

Severity

0

No erosion -
Healthy peristomal skin


1

Damage to the upper
level of the skin


2

Damage to the lower
layers of the skin

Area =

+

Severity =

Subscore =

T
Tissue overgrowth

Area

0

No discolouration -
Healthy peristomal skin


1

Less than 25% of the
skin covered by the
adhesive is affected


2

Up to 50% of the
skin covered by the
adhesive is affected


3

More than 50% of
the skin covered by the
adhesive is affected

Severity

0

No discolouration -
Healthy peristomal skin


1

Raised tissue above
skin level


2

Raised tissue
above skin level
with complications

Area =

+

Severity =

Subscore =

"D" subscore + "E" subscore + "T" subscore = DET Score

